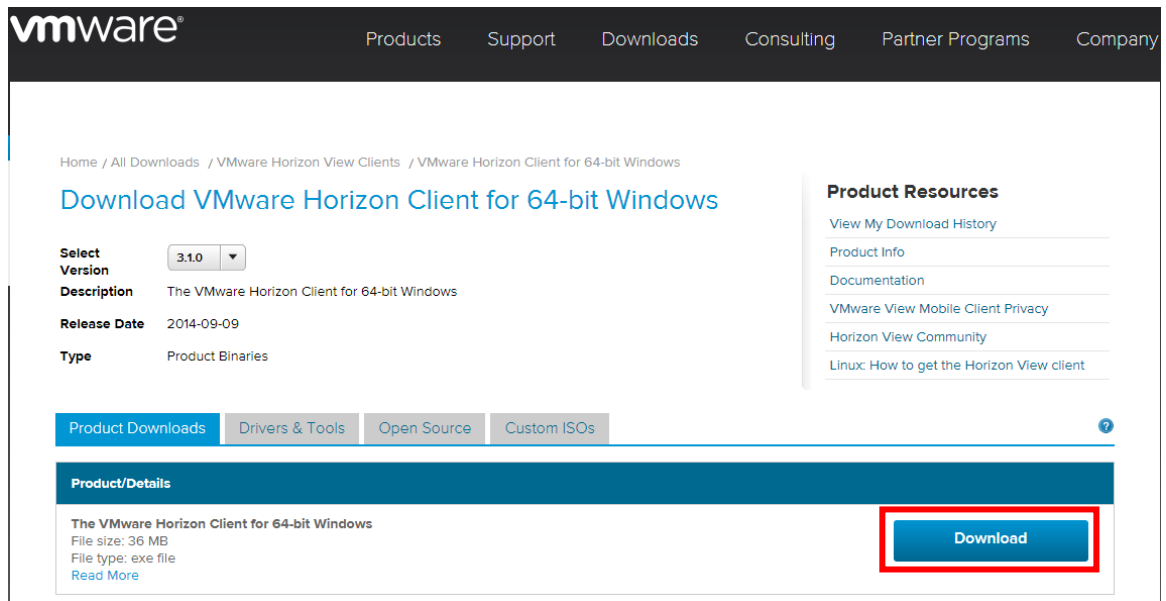


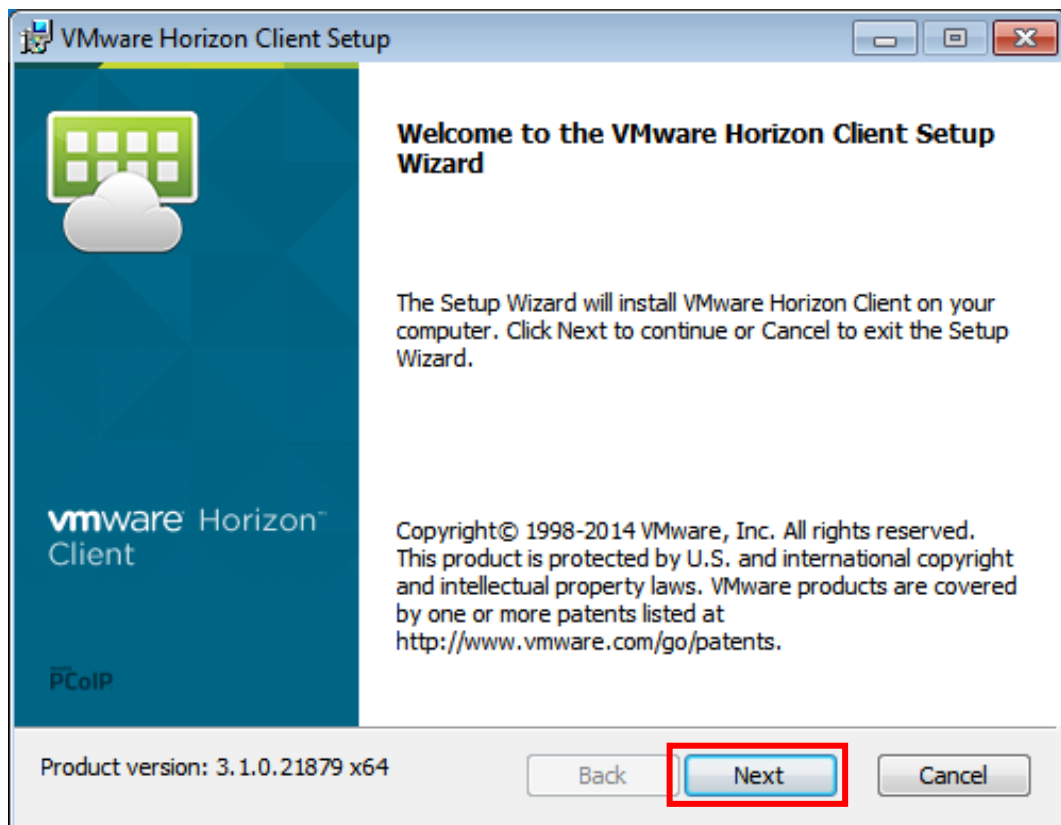
## **Windows System Instructions**

1. Please go to [Tamkang SoftCloud website](#) and click “[Application](#)” to register the services. The service will be available when the notification has been received. (The process would take around 30 minutes).
2. Setting up VMware Horizon Client application. (If you've already installed VMware Horizon Client, please skip to step3)
  - (1) [VMware Horizon Client for Windows](#)
  - (2) VMware Horizon Client Installation Steps:

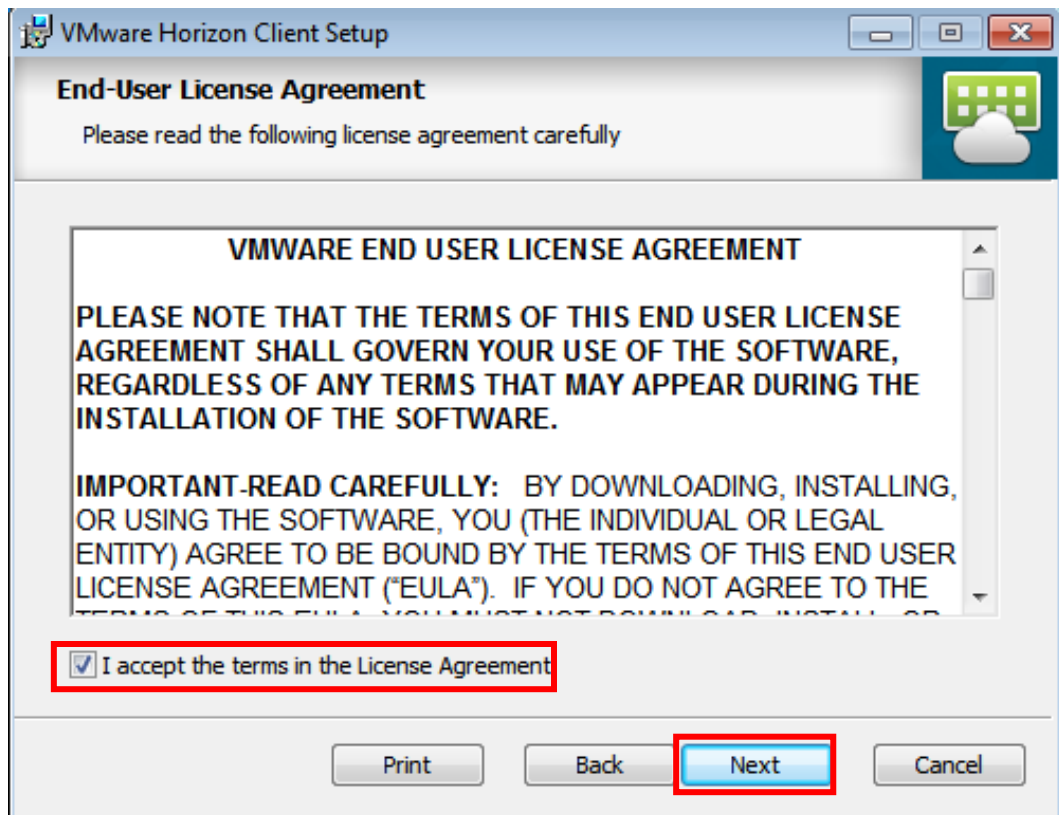
- a. Go to the website and click 「Download」



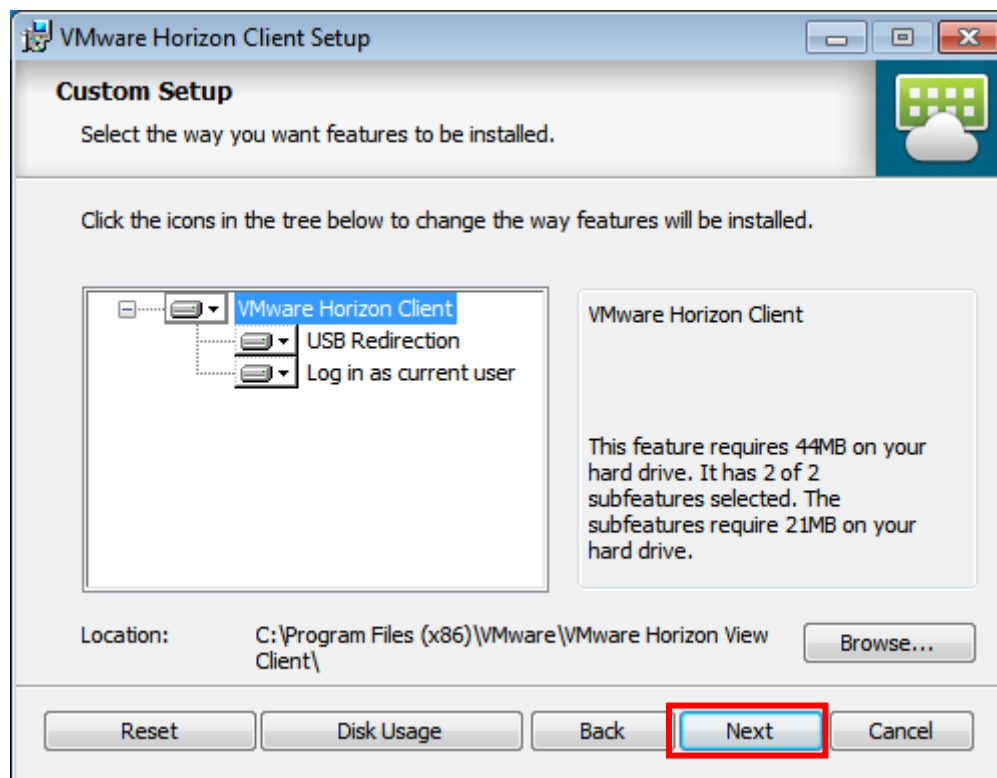
- b. Click 「Next」



- c. Check  I accept the terms in the License Agreement  and then click  Next

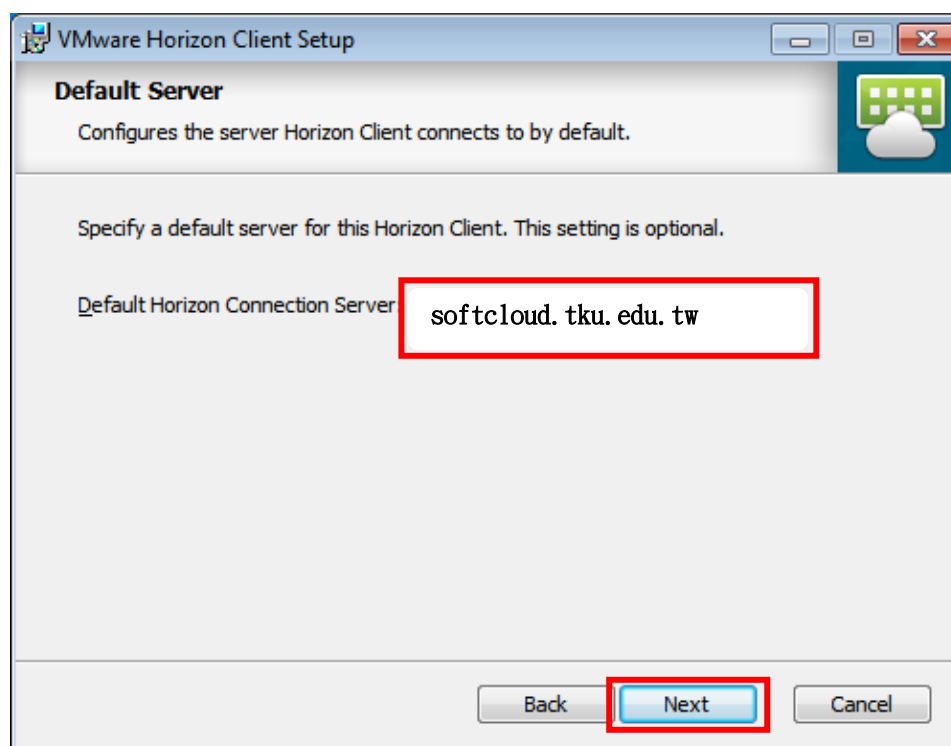


d. Click 「Next」

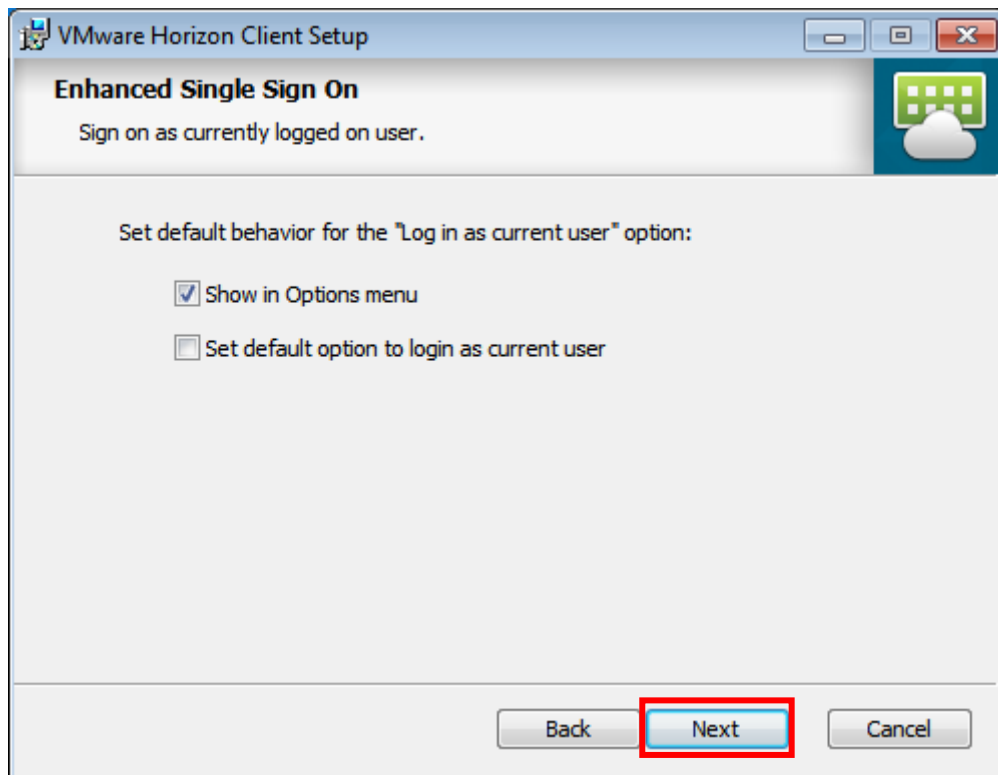


e. Set the Default Horizon Connection Server as

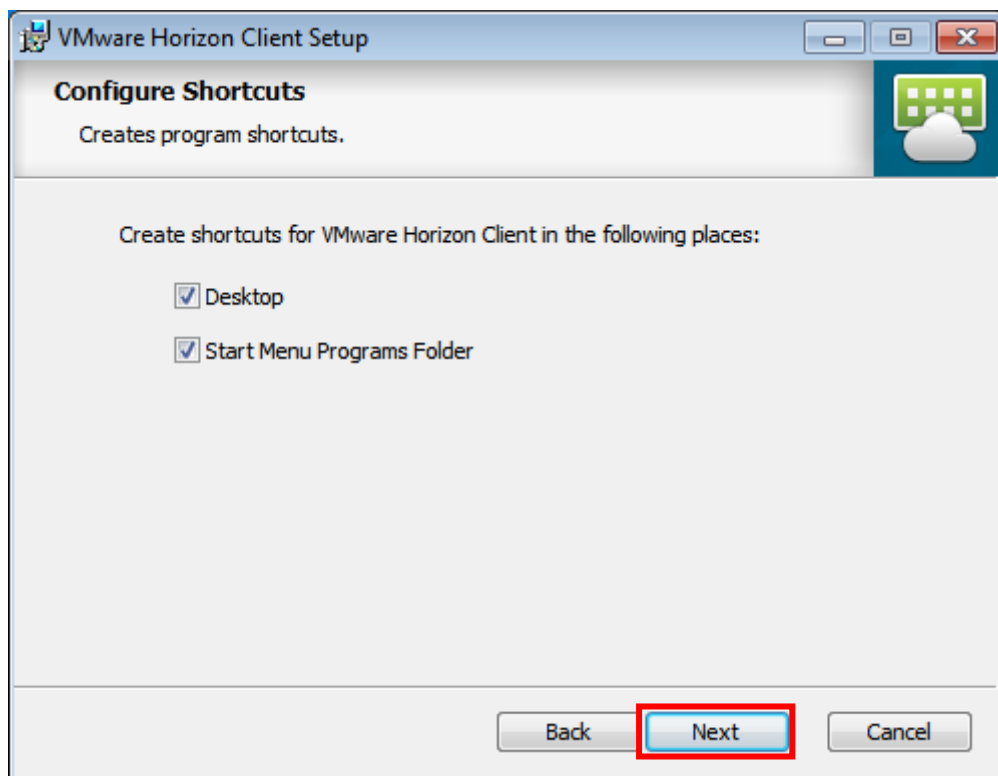
「softcloud.tku.edu.tw」 and click 「Next」



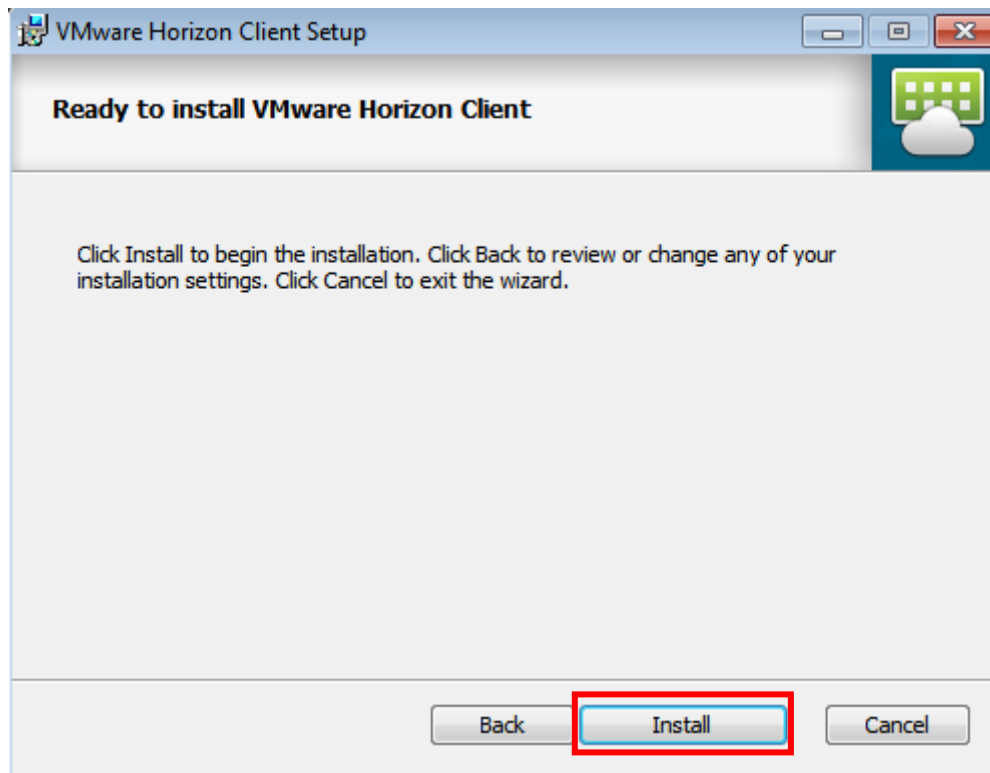
f. Click 「Next」



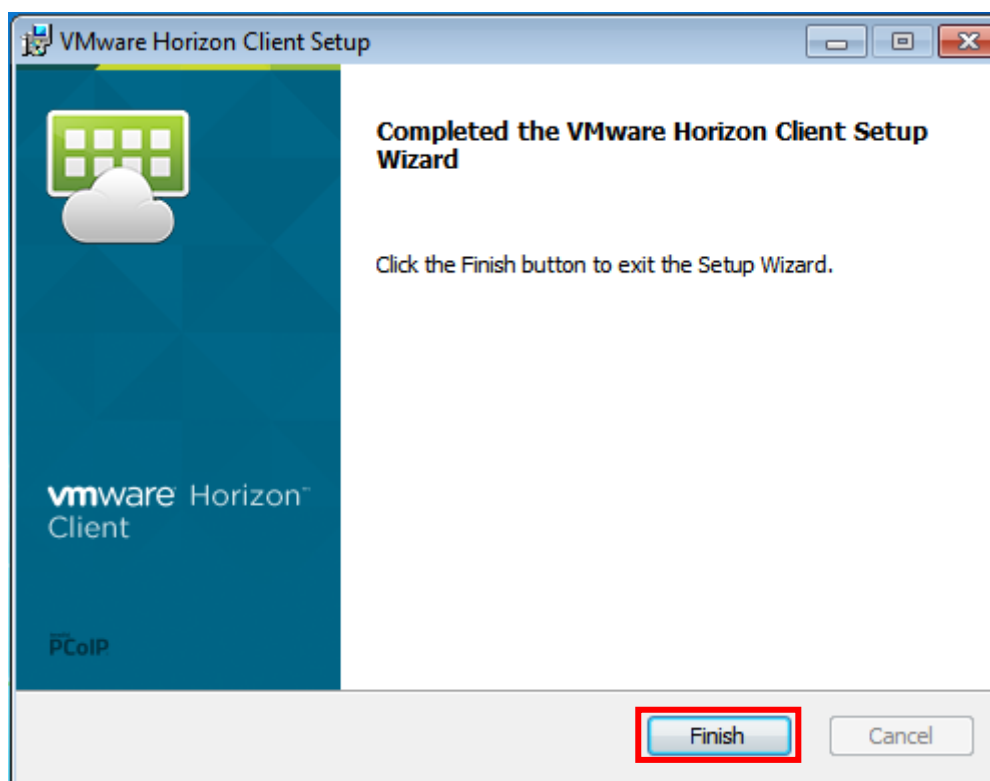
g. Click 「Next」



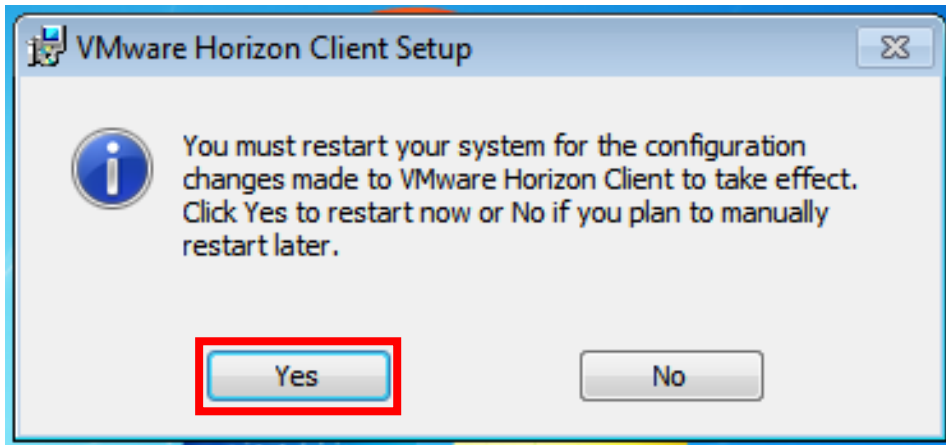
h. Click 「Install」



i. Click 「Finish」

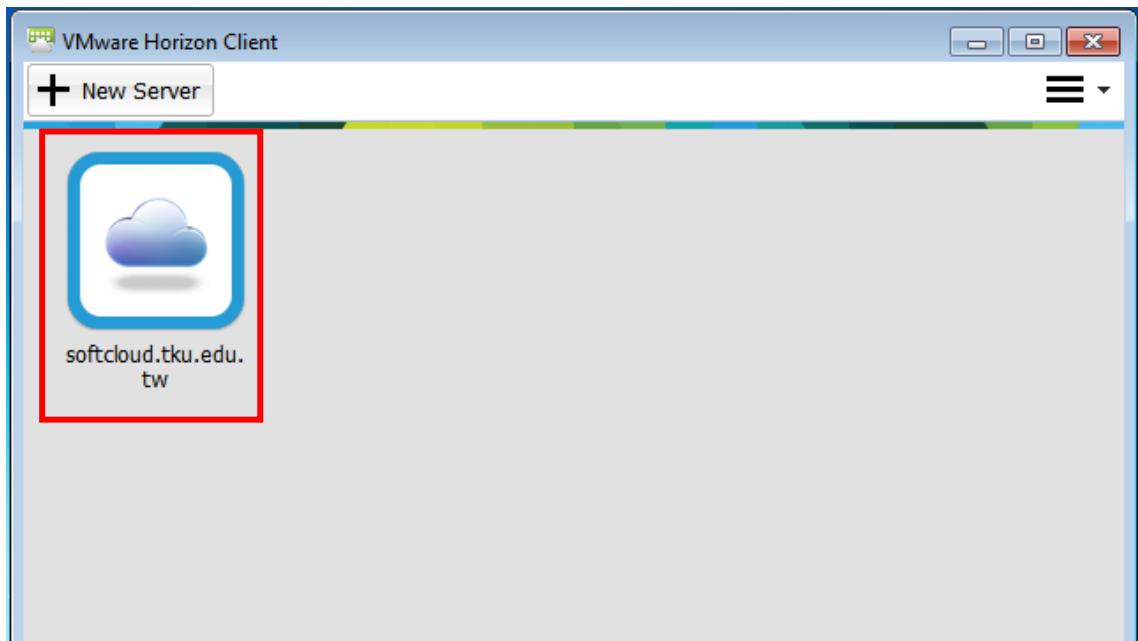


- j. Click 「Yes」 to restart your computer and the installation will take effect.

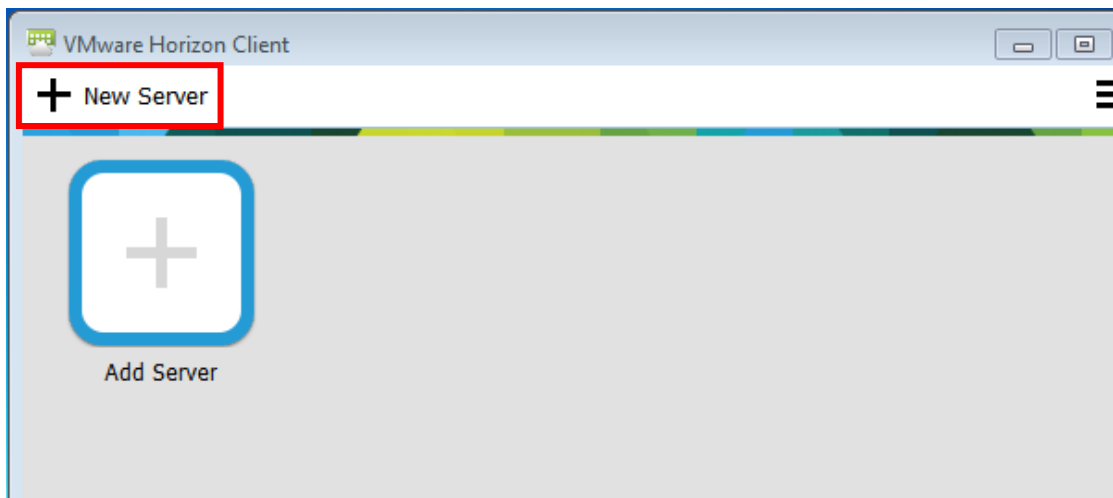


3. Click the VMware Horizon Client icon on the desktop.

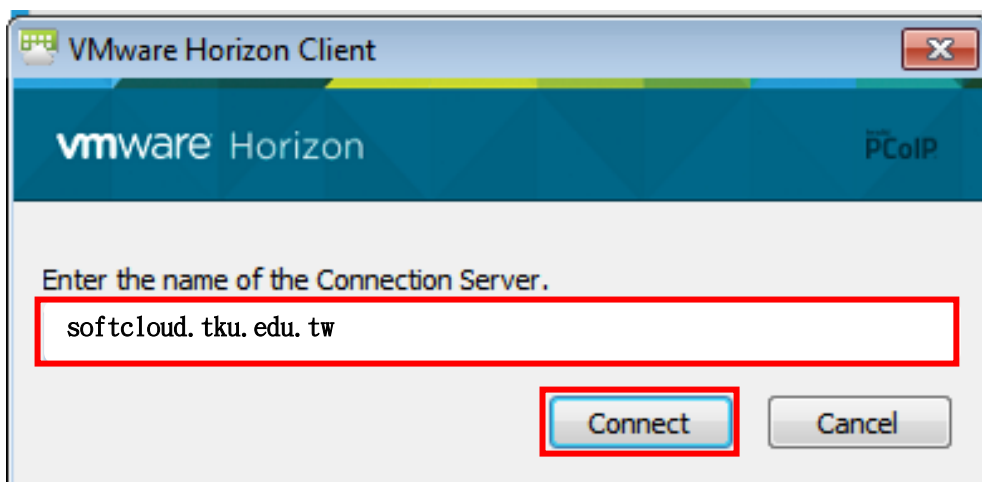
- 4(a). Make sure the server is 「softcloud.tku.edu.tw」 and double-click to connect.



4(b). If there is no default sever, then add 「New Server」 manually.(Jump to step 3 if there is a default server)

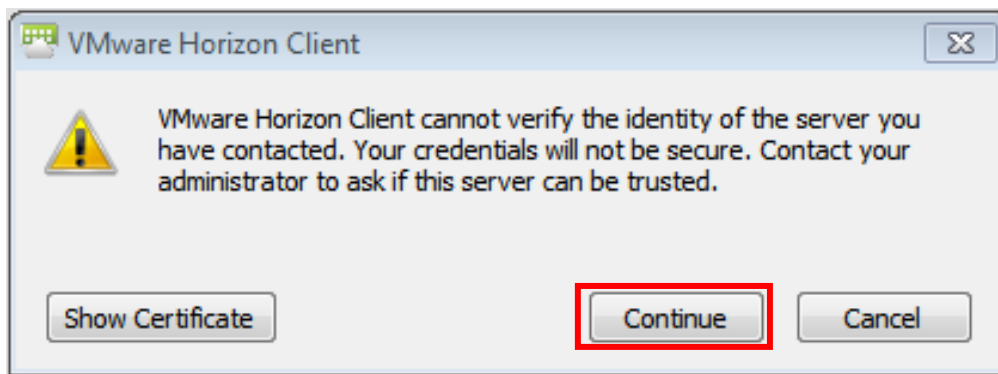


Setting the server name as 「softcloud.tku.edu.tw」 and then click 「Connect」

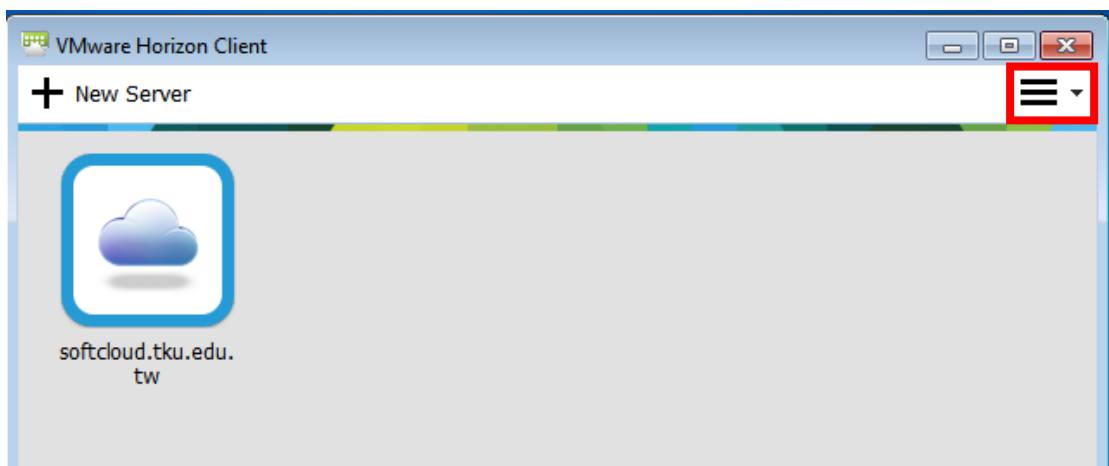




5. Click “Continue”

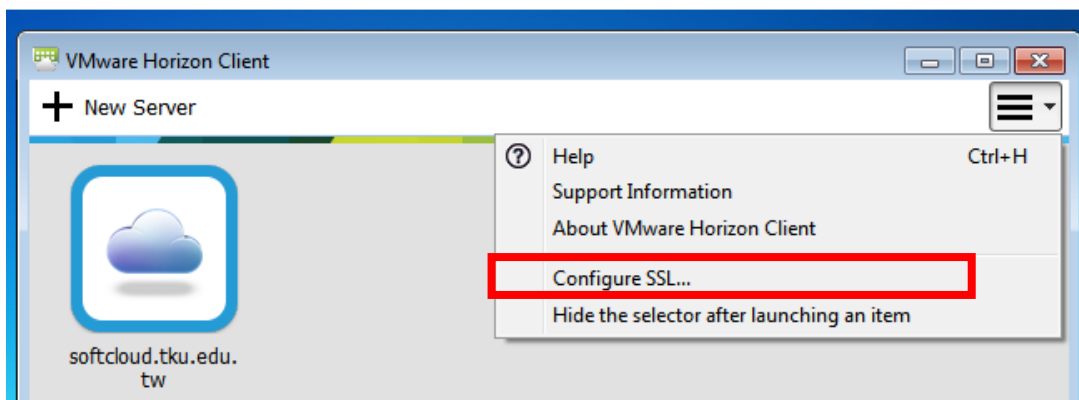


To cancel a warning message which pop-up every time you log in (as image shown above), you can follow these steps below.

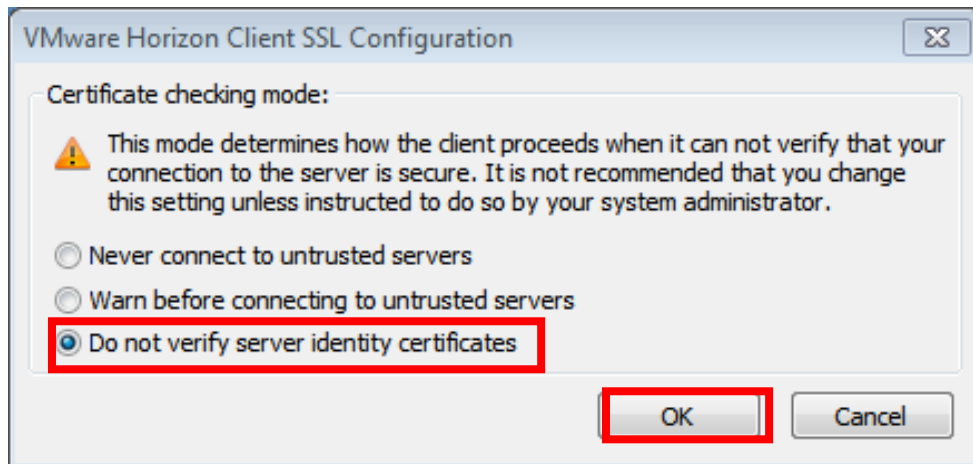


(1) Click 「 (Option) 」

(2) Click 「configure SSL...」

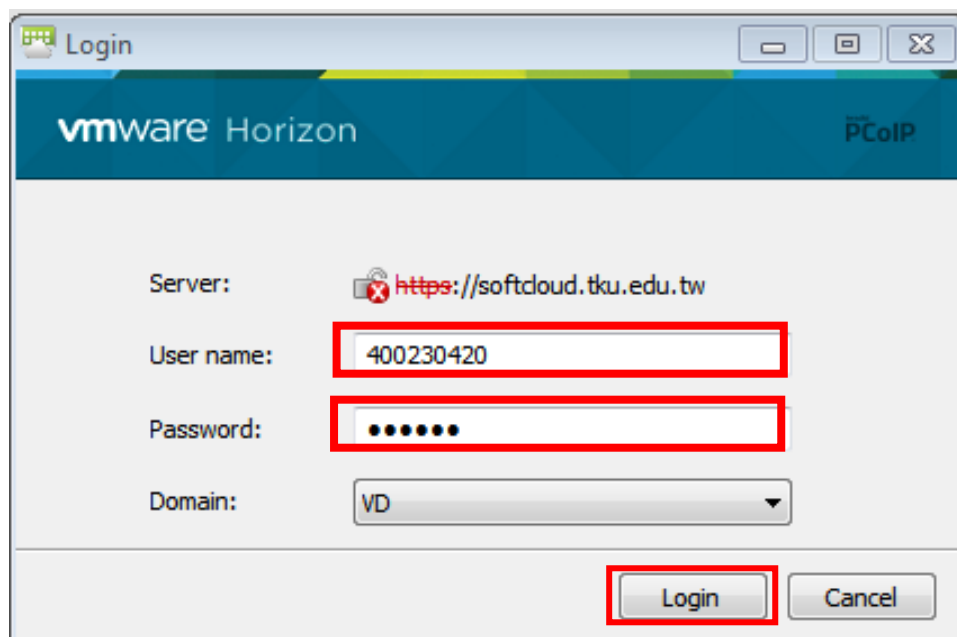


- (3) Select 「 Do not verify server identity certificates 」 and click 「 OK 」



6. Enter your username and password to 「 login 」 :

The usernames of TKU students and faculty are 「 Student ID 」 and 「 Employees Code ID 」 respectively. The password is single sign-on (If you didn't change your password before, login with the last 6 digits of your ID.)



7. Double-click the icon to connect.



8. Just close the window directly to log out TKU Software Cloud.

